

DAILY RESEARCH, 8 SEPTEMBER 2020

PT PROFINDO SEKURITAS INDONESIA

**GD PERMATA KUNINGAN LT 19
JL KUNINGAN MULIA KAV 9C GUNTUR SETIABUDI JAKARTA SELATAN 12980**

TELP +62 21 8378 0888

EMAIL : CUSTOMERSERVICE@PROFINDO.COM

WWW.PROFINDO.COM | PROCLICK.PROFINDO.COM

MARKET MOVERS



Bursa saham AS pada tutup pada perdagangan senin 7 September 2020. **DOW 0%, S&P 0%, NASDAQ 0%**

Bursa saham Eropa ditutup menguat dimana investor menanti pertemuan ECB terkait rencana Stimulus Ekonomi Zona Eropa. **Indeks DAX +2.01%, FTSE +2.39%, CAC +1.79%**

Bursa Saham Asia dibuka mayoritas menguat setelah rilis data Ekspor China yang meningkat diatas Ekspektasi. **Hang Seng -0.43%, KOSPI +0.78%, Nikkei+0.42%**

Harga minyak mentah dunia turun lebih dari 1% setelah Arab Saudi memotong pasokan Minyak ditengah masih rendahnya permintaan Minyak Mentah dunia ditengah Pandemi Covid 19. Harga emas dunia menguat dimana para investor terus memburu logam mulia ini untuk lindung asset mereka dikarenakan indikasi pemulihan ekonomi yang masih akan berkepanjangan. **WTI -1.99%, Brent Oil -1.09%, Gold +0.33%.**

IHSG pada perdagangan hari ini diperkirakan akan **BULLISH** dengan Range pergerakan **5195-5337** dengan saham-saham yang dapat diperhatikan : **GJTL IMJS ADRO MNCN MEDC TOWR**

MARET DATA

AMERIKA

DOW 30	28,133.31	-159.42	-0.56%
S&P 500	3,426.96	-28.10	-0.81%
NASDAQ	11,313.13	0.00	0.00%

EUROPE

DAX	13,100.28	+257.62	+2.01%
FTSE 100	5,937.40	+138.32	+2.39%
CAC 40	5,053.72	+88.65	+1.79%

ASIA

SHANGHAI	3,301.22	+8.63	+0.26%
HANGSENG	24,589.65	-105.80	-0.43%
SET	1,311.95	-3.93	-0.30%
KOSPI	2,402.81	+18.59	+0.78%
JCI	5,230.20	-9.65	-0.18%
NIKKEI	23,187.50	+97.55	+0.42%
ASX	6,014.80	+70.00	+1.18%

COMMODITIES

GOLD	1,933.60	-0.70	-0.04%
WTI OIL	39.11	-0.66	-1.66%
BRENT OIL	42.02	0.00	0.00%
COAL	49.90	-0.50	-0.99%
PALM OIL	2900	-50	-1.69%
TINS	18,285.00	-32.50	-0.18%
NICKEL	15,205.00	0.00	0.00%

EVENT & ECONOMIC CALENDER



ECONOMIC CALENDER :

INDONESIA

GLOBAL

070920	GERMAN INDUSTRIAL PRODUCTION (MoM) (JUL) BRC RETAIL SALES MONITOR (YoY) (AGUSTUS) JAPAN HOUSEHOLD SPENDING (MoM) (JUL) JAPAN CURRENT ACCOUNT (JUL) JAPAN GDP (Q2)
080920	FRANCE NON FARM PAYROLS (QoQ) (Q2) GERMAN TRADE BALANCE (JUL) EURO GDP (QoQ) (Q2) CHINA CPI (MoM) (AGUSTUS)
090920	US JOB OPENING (JUL) US API WEEKLY CRUDE OIL STOCK
100920	ECB MONETARY STATEMENT ECB INTESEST RATE DECISION US INITIAL JOBSLESS CLAIMS US PPI (MoM) (AGUSTUS) US CRUDE OIL INVENTORIES
110920	GBP GDP (MoM) (AGUSTUS) GBP INDUSTRIAL PRODUCTION (MoM) (JUL) GBP TRADE BALANCE (JUL) GERMAN CPI (MoM) (AGUSTUS) SPAIN CPI (YoY) (AGUSTUS) US CORE CPI (MoM) (AGUSTUS)

CORPORATE ACTION :

DEVIDEN

070920	XISC RP 11.5 (CUM 0709, PAYMENT 1609) XIIT RP 9.2 (CUM 0709, PAYMENT 1609) TEBE RP 4 (CUM 0709, PAYMENT 3009) R-LQ45X RP 16.6 (CUM 0709, PAYMENT 1609) GEMA RP 5 (CUM 0709, PAYMENT 0110) DPNS RP 3 (CUM 0709, PAYMENT 3009)
--------	---

RUPS

070920	INCO
090920	POLY
100920	LMAS JAYA

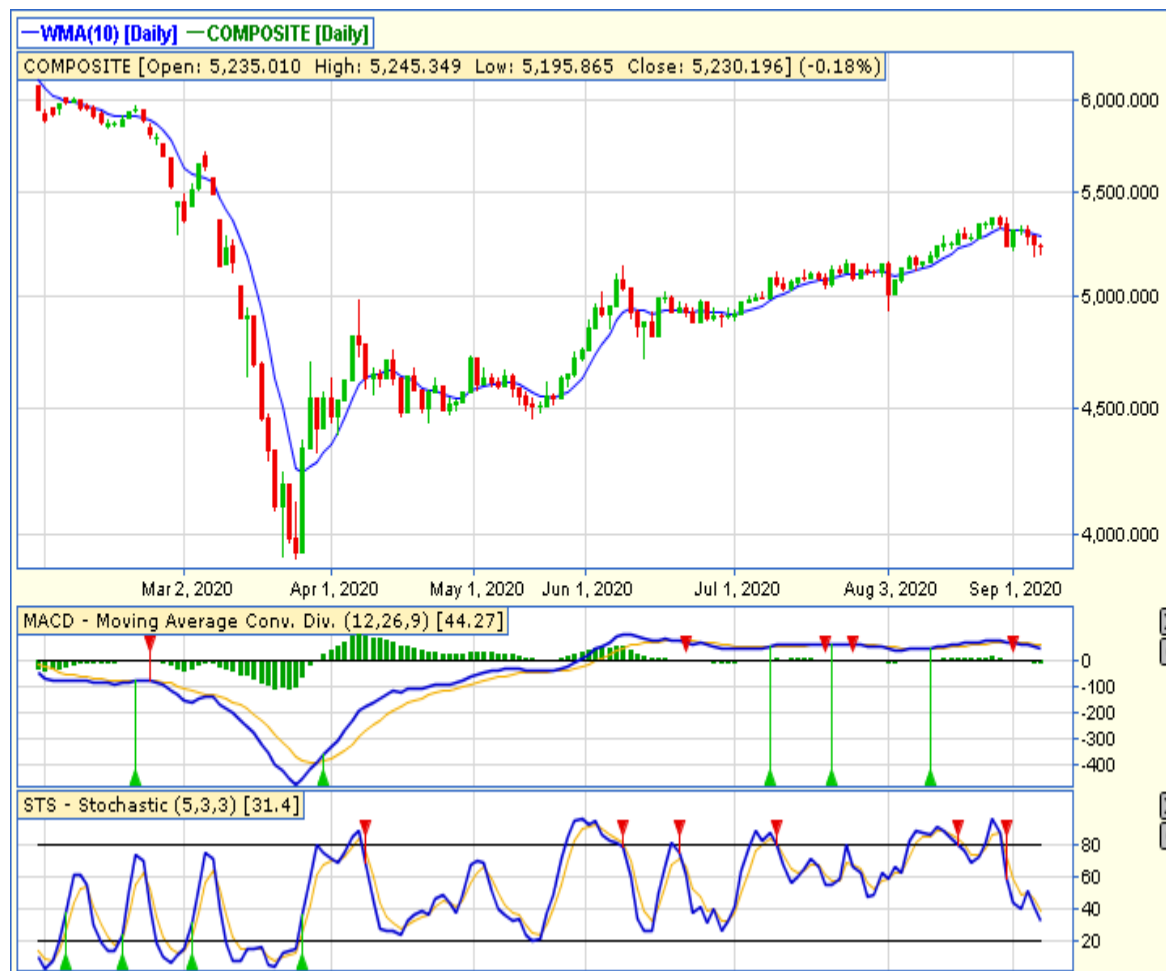
IPO

070920	PT Selaras Citra Nusantara Perkasa Tbk (SCNP) RP 110 PT Kurniamitra Duta Sentosa Tbk (KMDS) RP 300 PT Bank Bisnis Internasional Tbk (BBSI) RP 480
080920	PT Soho Global Health Tbk (SOHO) RP 1820 PT Puri Global Sukses Tbk (PURI) RP 170
100920	PT Rockfields Properti Indonesia Tbk (ROCK) RP 1340 PT Grand House Mulia Tbk (HOMI) RP 380

RIGH ISSUE

080920	MEDC RATIO 2:5 (NEW:OLD) CUM 0809 TRADING PERIOD 14-18 SEPT
--------	---

JAKARTA COMPOSITE INDEX



PREVIOUS 7 SEPTEMBER 2020

CLOSING	5230.196 -0.184%
TRANSACTION	IDR 6.07 TRILLION
FOREIGN NETT	IDR 790 BIO (SELL)

PREDICTION 8 SEPTEMBER 2020

BULLISH (TECHNICAL REBOUND)
RANGE 5195-5337

INSIDE BAR
STOCHASTIC : OVERSOLD
MACD : HISTOGRAM NEGATIF DAN DOWNTREND

TECHNICAL RECOMENDATION



GJTL – PT GAJAH TUNGGAL TBK

CLOSING 7/9/2020 RP 530 (+1.9%)

**SELL ON STRENGTH
TAKE PROFIT 585**

HAMMER
STOCHASTIC : NETRAL LOWER AREA
MACD : HISTOGRAM NEGATIF DAN DOWNTREND

TECHNICAL RECOMENDATION



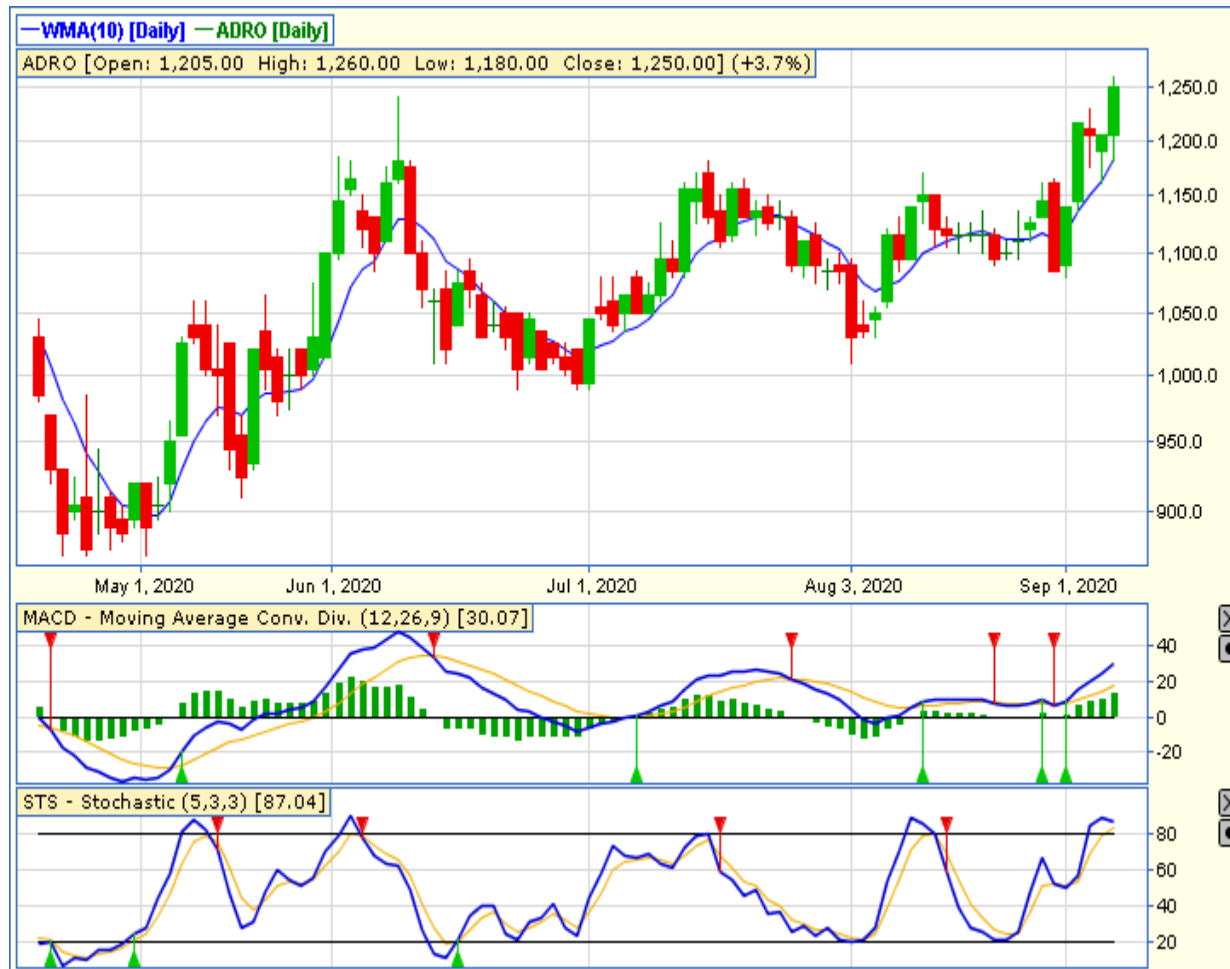
IMJS – PT INDOMOBIL MULTI JASA TBK

CLOSING 7/9/2020 RP 300 (+6.4%)

**SELL ON STRENGTH
TAKE PROFIT 336**

**FALLING WEDGE
STOCHASTIC : GOLDEN CROSS
MACD : HISTOGRAM NEGATIF MENGECIL DAN
NETRAL DI LOWER AREA**

TECHNICAL RECOMENDATION



ADRO – PT ADARO ENERGY TBK

CLOSING 7/9/2020 RP 1250 (+3.7%)

BUY

TARGET PRICE 1350

STOPLOSS < 1230

BREAK OUT TRIANGLE

STOCHASTIC : UPTREND

MACD : HISTOGRAM POSITIF DAN UPTREND

TECHNICAL RECOMENDATION



MNCN – PT MEDIA NUSANTARA CITRA TBK

CLOSING 7/9/2020 Rp 860 (+1.8%)

BUY

TARGET PRICE 950

STOPLOSS < 835

BULLISH ENGULFING

STOCHASTIC : GOLDEN CROSS

MACD : HISTOGRAM NEGATIF MENGECIL DAN BERSIAP GOLDEN CROSS

TECHNICAL RECOMENDATION



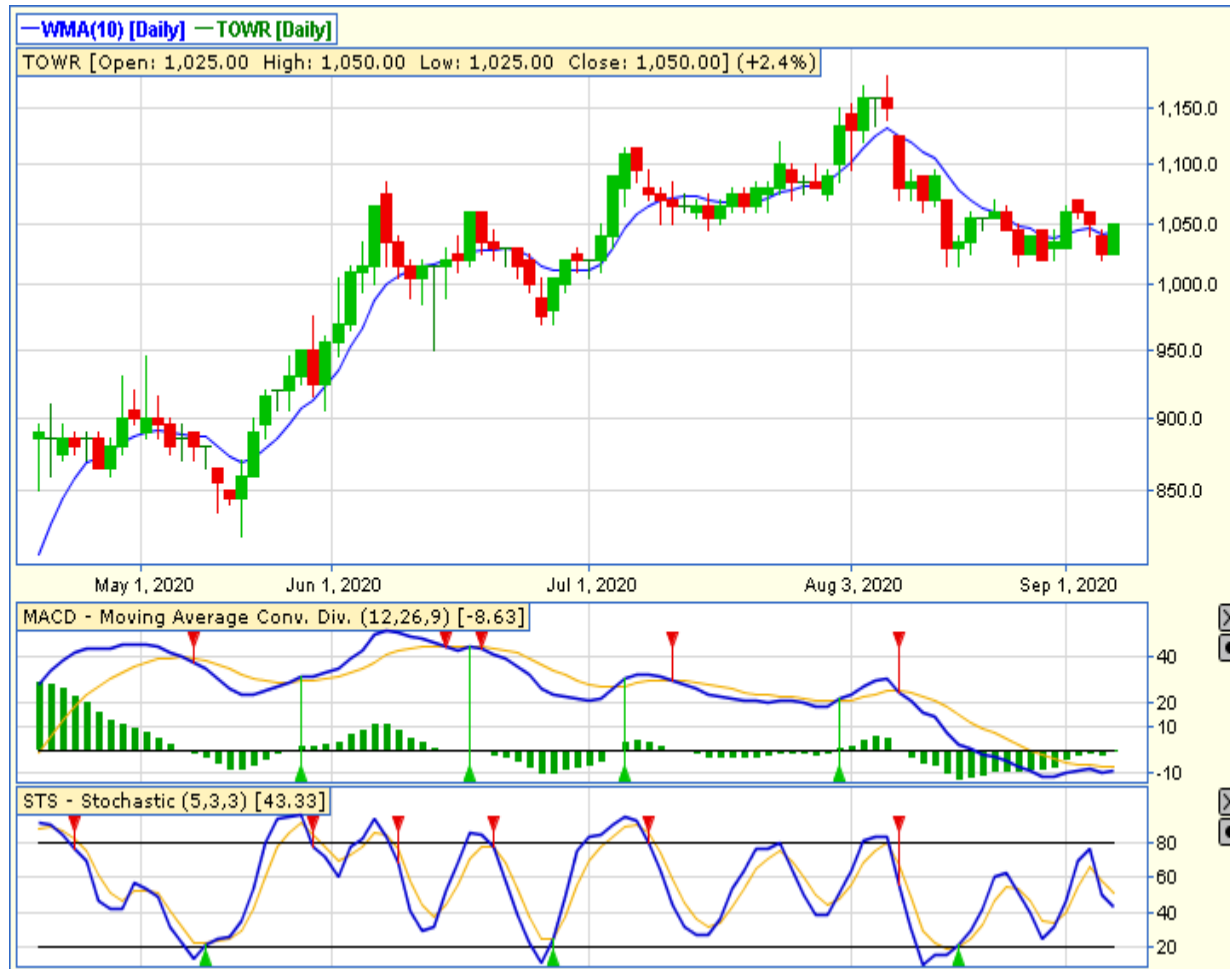
**MEDC – PT MEDCO ENERGI INTERNASIONAL
TBK**

CLOSING 7/9/2020 RP 565 (+2.7%)

**SELL ON STRENGTH
TAKE PROFIT 600**

MORNING STAR
STOCHASTIC : UPTREND
MACD : HISTOGRAM NEGATIF DAN
DOWNTREND

TECHNICAL RECOMENDATION



TWR – PT SARANA MENARA NUSANTARA TBK

CLOSING 7/9/2020 RP 1050 (+2.4%)

**SELL ON STRENGTH
TAKE PROFIT 1070**

HAMMER
STOCHASTIC : NETRAL MIDLE AREA
MACD : HISTOGRAM POSITIF DAN UPTREND

RESEARCH TEAM



YULIANA

**RESEARCH ANALYST &
CORPORATE FINANCE**



DIMAS WP PRATAMA, CSA

TECHNICAL ANALYST

EQUITY CAPITAL MARKET TEAM



JESSIE JAMES

HEAD OF EQUITY SALES



PRASETYO NUGROHO

HEAD OF DEALING ROOM



GABRIELLA PRATIWY

HEAD OF ONLINE TRADING